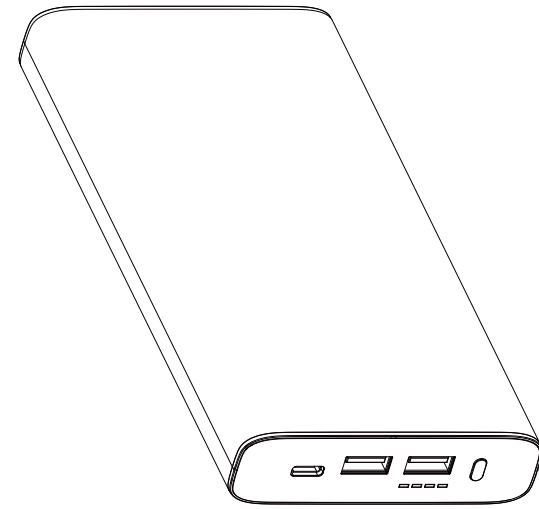


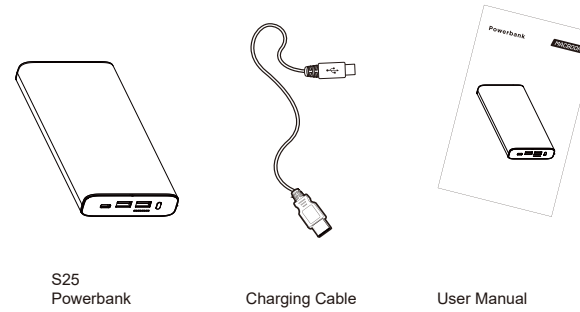
S25
26800mAh
Powerbank
100W PD 3.0 USB-C



Specifications

Model: S25
 Battery Type: 20650 Battery
 Capacity: 96.48Wh (3.6V=26800 mAh)
 Input Type-C: 5V=3A, 9V=3A, 12V=3A, 15V=3A, 20V=3A
 Output USB-A1/A2: 5V=3A, 9V=2A, 12V=1.5A; USB-A1+USB-A2: 5V=3.4A
 Output Type-C: 5V=3A, 9V=3A, 12V=3A, 15V=3A, 20V=5A
 Dimensions: 23.5*87.4*189mm

Package Contents



S25 Powerbank

Charging Cable

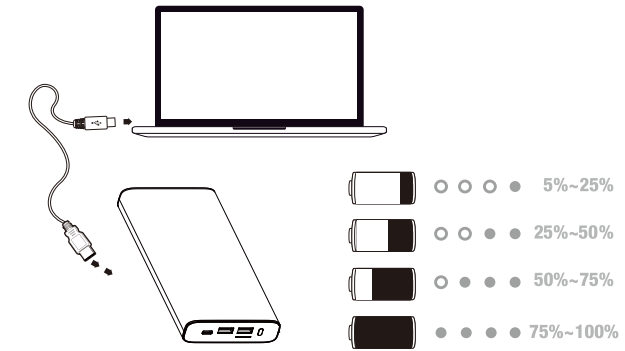
User Manual



PowerSafe Management

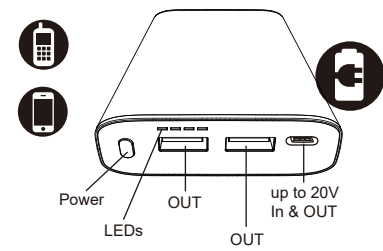
Guarantees protection against short circuits, and over-charging.

To charge other devices

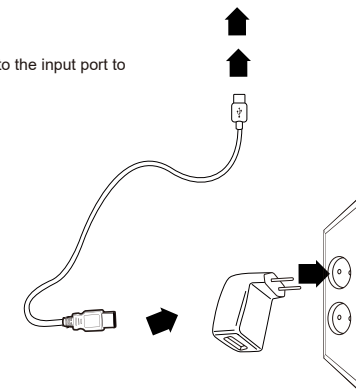


Blinking light indicates charging. Solid light indicates fully charged.

To charge the S25



Connect the type C end to the input port to recharge



Adapter not included

Safety Notice:

- Fully charge the Powerbank once before first use.
- Use the included cable to charge the Powerbank.
- In order to ensure the durability of the battery during irregular use, charge and discharge the Powerbank once every three months.
- Charging by unsupervised, short circuit or mechanical damage would cause overheating and fire.
- Do not immerse the product in water or other liquids.
- Handle the product carefully. Shocks, vibrations or fall from a low height can damage the product.
- If liquid is leaking, stop using the device.
- A remodeling or modification of the product would affect the safety. Risk of injury!
- Don't open the appliance without proper authorization and don't perform repairs yourself!
- Please keep the product away from children.
- Modifications and mistakes reserved.

This Electrical device does not belong in the garbage. For proper disposal, please contact the public collection in your community.

Please note: we dont accept liability for any damages on connected devices please check compatibility of our product with the manufacturer of your device before use.



Company: Voltero B.V
 Address: Kanaaldijk-Noord 111, 5642 JA Eindhoven
 Mail: info@voltero.nl

Made in China

